

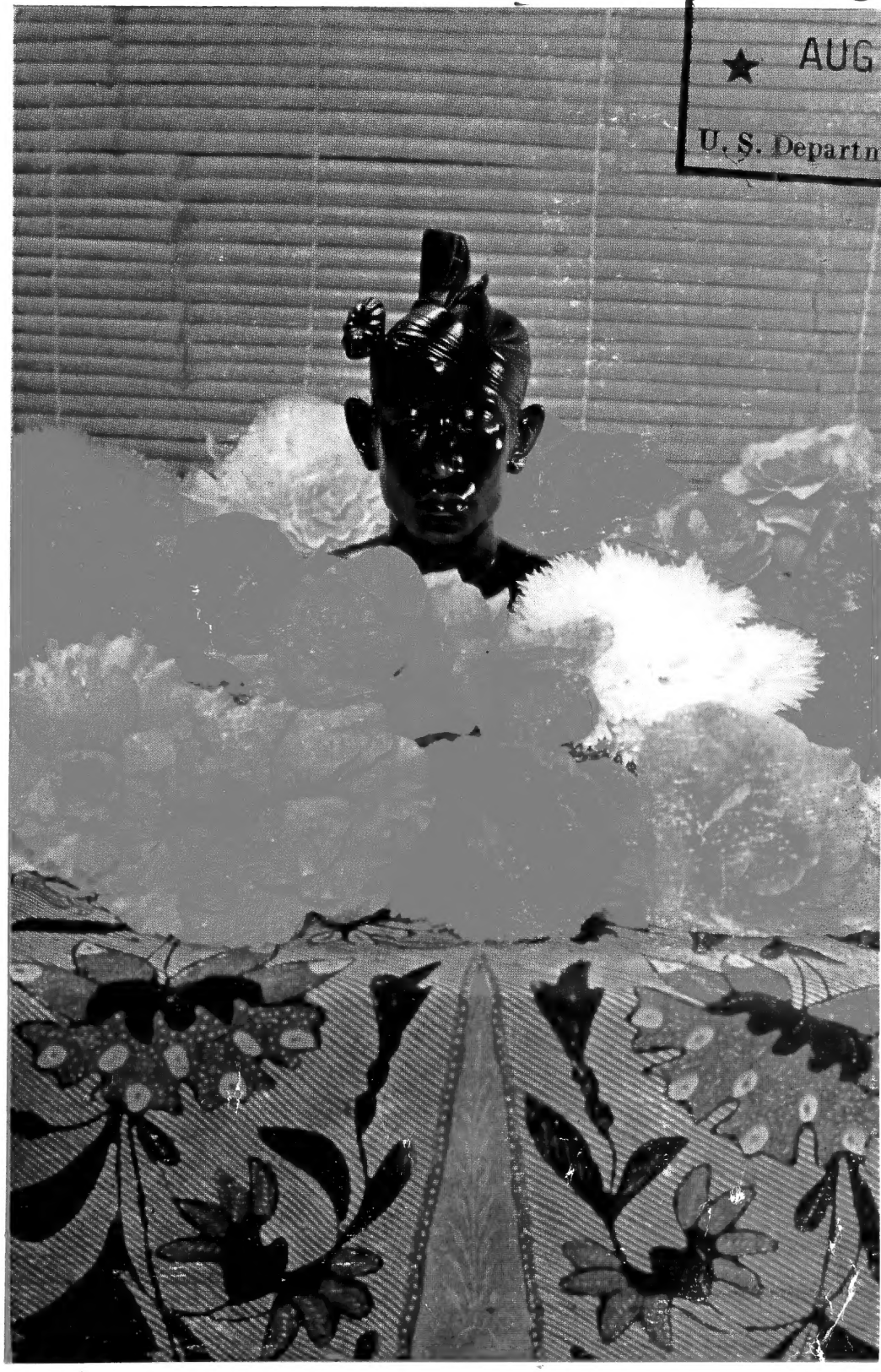
Historic, Archive Document

Do not assume content reflects current scientific knowledge, policies, or practices.

62.09

1948

LIBRARY RECEIVED
 ★ AUG 31 1948 ★
 U. S. Department of Agriculture



Antonelli Bros.

BEGONIA GARDENS

TELEPHONE: 2963-J, 1991-R SANTA CRUZ, CALIFORNIA

Nursery Located 3 Miles East of Santa Cruz on Capitola Road
 One Block East of Live Oak School. - - - - Route 2, Box 252

1296

BEGONIA GARDENS

COMING FROM SANTA CRUZ TURN TO RIGHT ON FIRST SIDE ROAD PAST CITY LIMITS.

COMING FROM WATSONVILLE TURN LEFT AT 41ST., THEN RIGHT ON CAPITOLA ROAD.

Nursery Located 3 Miles East of Santa Cruz, 1 Block East of Live Oak School, on Capitola Road. Mailing Address:

ROUTE 2, BOX 252, 1296
SANTA CRUZ, CALIFORNIA

Breeding Stock of Tuberous Begonias are at their best during July and August.

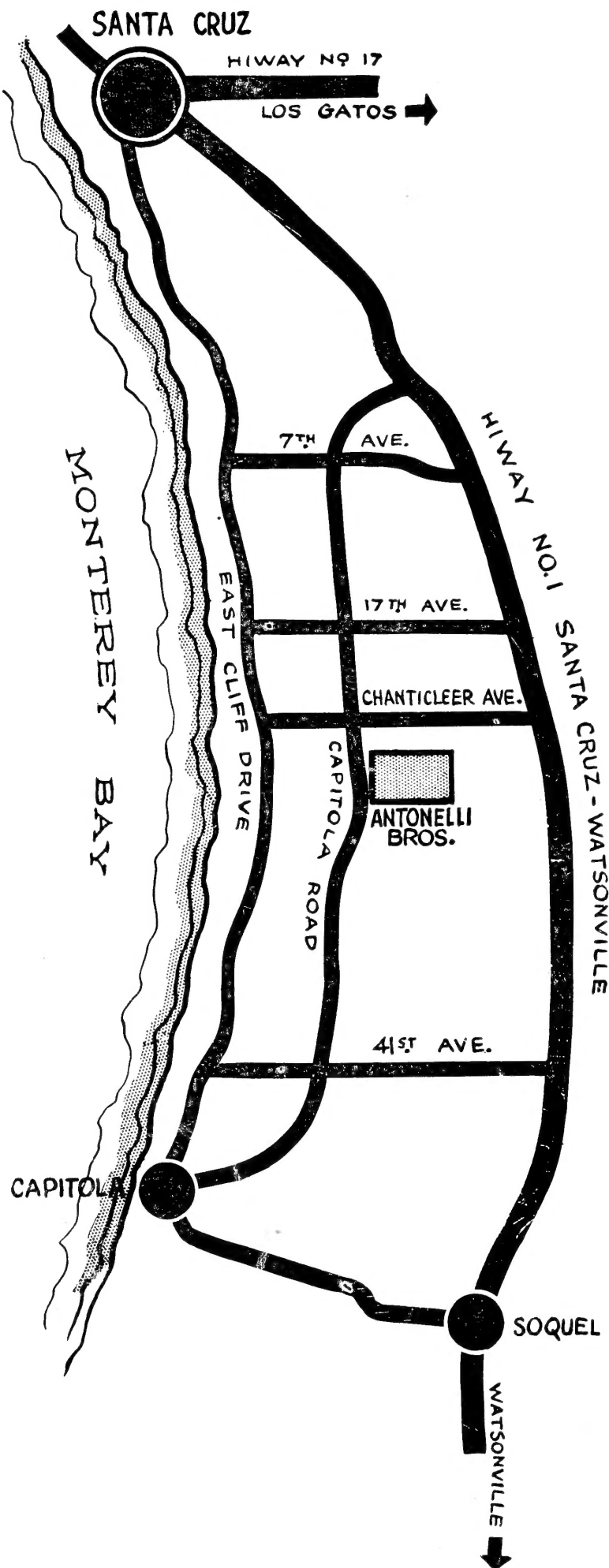
5 acres of Lath Houses with thousands of seedlings are in full Bloom August and September.

Gloxinias are also at their best from June through August.

Transvaal Daisies and Delphiniums are in Bloom in Spring through Summer.

Polyanthus Primrose are at their best in March.

COVER DESIGN AND PHOTOS
BY KENNETH C. STONE, SANTA CRUZ



ANTONELLI
TELEPHONE 2963-J, 1991-R

BROTHERS
SANTA CRUZ, CALIFORNIA

THE CULTURE OF TUBEROUS ROOTED BEGONIAS

FROM SEED TO THE TUBER

SEED: We sow seed from December 15 until March. Best results are obtained from February sowing. Sow seed in a well drained flat, with about one and one half inches of well rotted leaf mould. Firm the corners and sides of flats, and level. Screen a fine layer over the surface, through a fine screen. Sow seed and water well with a fog like sprayer, cover with glass and darken with paper until germination. With a temperature of from 60 to 70 degrees it will take from 8 to 10 days for germination, as soon as the seed shows small white specks remove the paper, after two or three days they will show small plants, remove glass and keep moist.

We sterilize our soil with steam to kill all weed seed and fungus and water with sterilized water until the third leaf shows on the small plants, then water with fresh water for fifteen to twenty days before transplanting in other flats.

TRANSPLANTING: Best mixture for transplanting, use 2/3 well rotted leaf mould, 1/3 light top soil with a light application of well rotted manure mixed thoroughly together.

PLANT one inch apart, when crowded, transplant into other flats. In five to six weeks they will be ready for seven inch pans or planted out in the garden about 8 or 9 inches apart. Plants should be planted where they have

plenty of fresh air and light but no strong sun or strong wind. Such as the north side of building, under a tree, on an open porch or well ventilated sun room. A lath house is ideal.

FEEDING: When plants are well established, feed with Fertilizer Emulsion which can be purchased at most seed stores and nurseries. Easily followed Directions on each bottle, or you may feed with Fish or Cotton Seed Meal. When feeding with the latter two dig a small trench around each plant and sprinkle one tablespoon of Meal and cover. Water well after feeding.

SEED sown in January and early February will start blooming in late July and be in full bloom in August until October, will start dying down in late November. You should then gradually take the water away from them. In December when the plants are quite yellow and falling apart dig, wash and put in the sun to dry, be sure all of the stem is out of the tuber, but don't break it off as this may injure the Tuber. Wait until stem is cured well enough so that a light pull will remove the stem. Dry well where the stem came out of the tuber in the sun and store away in a cool dry place for the winter. In years of early rainfall there is danger of losing your tubers by rotting. In this case dig and place in trays until plants are sufficiently cured were a slight pull will remove stem from tuber.

TUBEROUS ROOTED BEGONIAS CHOICE SELECT

CHOICE SELECT

Each Season when in bloom we select and mark the choicest seedling plants in our lath houses for those who want the best in Begonias.

We are not selecting the Rose Type separately from the Camellia Type. When you order Double Camellia Choice Select, you will receive a good percentage of Rose Type and possibly a few Double Ruffled type. If you desire your Begonias to be Double

Ruffled type, please specify Double Ruffled Type when you order. We will select your order from the crosses that are predominately Double Ruffled.

In this way we can keep our prices moderate.

Choice Select come in all the types and colors on Page 7, with the exception of the single varieties.

	each	doz.	100
Large	.70	\$7.00	\$56.00
Medium	.55	5.50	44.00

GROWING HINTS

Never plant tubers before a sprout appears, always start your begonias in black California Peat if possible, (Cal Peat can be used) remember that the better the root system the finer the plants. If you are unable to secure Peat use a mixture of 2/3 Leaf Mould and 1/3 sand thoroughly mixed together.

Be careful of your watering while in

trays and in the early stages after potting water thoroughly after planting then be sure soil shows dryness before watering again.

When Begonias are in full bloom apply fertilizer emulsion every 2 weeks for 2 or 3 applications, this will give you a longer blooming season with better flowers.

DROPPING OF BUDS

The three main causes of the flower buds dropping are overwatering, too dense of shade and lack of air.

Begonias although hardy and easily grown under favorable conditions are very temperamental to the above:

Begonias will not grow indoors. If your plants are tall with large leaves and no blossoms you lack sufficient light. If you cannot remedy this you should remove plants to a less shaded location.

The most cases of overwatering is when Begonias are first potted or planted in the garden. Condition of your soil is important, unless under

very sandy conditions do not use Peat in preparing your garden bed. When potting, have broken Pottery in bottom of Pot. Never use Peat in Potting mixture. Water thoroughly after first planting then never water until soil shows dryness.

PESTS

The two most common pests of Begonias are the Caterpillar that eats the leaves and the snail that likes to live among the foilage. Caterpillars are best controlled by picking off. For snails use bait in pellet form sold commercially for that purpose.

GLOXINIA SEED AND TUBER CULTURE

Gloxinia Seed and Tubers are very similar to the Begonias, but with a few exceptions the Gloxinia is a house plant and when the plant dies down

the Tuber should be put in flats with moist mixture until it starts to grow then re-pot.

GLOXINIA COLORS

MOUNT BLANC

White

BLANCHE DE MERU

Rose, White Throat

EMPEROR FREDERICK

Scarlet, White Border

EMPEROR WILLIAM

Violet, White Border

ETOILE DE FEU

Scarlet

GLOXINIA TUBERS READY

IN JANUARY

	each	doz.	100
Large Tubers	.50	\$5.00	\$38.00
Medium Tubers	.40	4.00	30.00

Seed: Packet \$2.00

PRINCE ALBERT

Purple, Frilled Edge

PRINCESS ELIZABETH

Soft Violet, White Throat

ROI DES ROUGES

Dark Crimson, Frilled Edge

VIOLACEA

Soft Violet

TIGRINIA SPOTTED

Colors: Pink, Rose, Scarlet, Lavender

GLOXINIA SEEDLINGS READY FROM

APRIL UNTIL JUNE

	doz.	100
Price	\$2.00	\$15.00

DELPHINIUM PLANTS AND COLORS

(PACIFIC STRAIN)

GALLAHAD

(Pure White)

GUINEVERE

(Pink Lavender) White Bee

CAMELIARD

(Clear Lavender) White Bee

KING ARTHUR

(Purple) White Bee

BLACK KNIGHT

(Darkest Violet) Black Bee

SUMMER SKIES

(Light Blue) White Bee

BLUE BIRD

(Medium Blue) White Bee

BLUE JAY

(Dark Blue) Black Bee

ASSORTED (All Colors)

DELPHINIUM SEED AND PLANT CULTURE

Delphinium seed sown in June and July for early spring blooms. December and January for mid-summer blooms. March for fall blooms. We sow seed in flats of 2/3 leaf-mould 1/3 light top soil mixed. We use flats 3 inches deep quite full and cover seed lightly so the seed is just covered with same mixture. Water well and keep dark until germination starts, put in semi shade for full germination and leave until third leaf is formed well on the plants harden in full sun-lite for a week and transplant 3 or 4 inches apart if in flats. Mixture of half leaf-mould and half light sandy top soil.

Preferably in beds of light soil with a little barnyard manure mixed in. Give them a semi shade for about a week give them full sun-lite for about 5 to 6 weeks, then they are ready for permanent location. Plant from 2 to 2 1/2 feet apart in full sun-lite.

Strong Delphinium Seedlings ready for shipment March and April for mid-summer blooms. June and July for Fall blooms. September and October for Spring blooms.

	each	doz.	100
Price	.25	\$2.50	\$18.00
Seed: Packet	\$1.00		
Field Clumps	.35	\$3.50	\$26.00

BEGONIA TUBERS AND SEEDLINGS

BEGONIA TUBERS READY IN JANUARY

ALL TYPES AND COLORS AS SHOWN

PRICES	each	doz.	100
Large	.40	\$4.00	\$30.00
Medium	.30	3.00	23.50

BEGONIA SEEDLINGS READY FROM APRIL UNTIL JUNE

All colors and types as shown on next page. These seedlings are strong twice transplanted plants ready to be planted in permanent place in the Garden or Potted in 7 inch pots. They can be shipped to all parts of the United States.

	doz.	100
Price	\$2.00	\$15.00
Seed: Packet	\$2.00	

STARTING AND GROWING OF LARGE AND MEDIUM SIZE TUBERS FOR POTTING

Begonia Tubers should never be started until they show a sprout, then plant in flats of peat so the bulb is just covered. Water well, put in dark warm place until about 2 inches high then give them light. When plants are about five inches high they are ready for potting. Care should be taken not to plant Begonias in too large a container. A 1½ inch Tuber requires an 8 inch pot, a 2 inch Tuber should be planted in a 10 inch pot.

In potting all types excepting hanging basket, you should leave but one shoot to each tuber, break all other shoots off at the tuber. The hanging baskets, you should leave all shoots,

because the more shoots you have the better formed baskets. Some of the larger flowering baskets grow with just a few shoots, it is best to pinch the tops of these so they will throw more branches.

In potting in eight inch pots mix 2 table spoons of fish meal in the bottom third of pot, the ten inch pots use 3 table spoons, 7 inch pots for seedlings or small bulbs use 1 table spoon. In this way the plants will start feeding when they are ready to bloom. Best potting mixture, well rotted leaf mould 1/6 cow manure mixed and rotted together then add one third light top soil.

TYPES AND COLORS OF TUBEROUS ROOTED BEGONIAS

DOUBLE CAMELLIA TYPE

White
Pink
Rose
Crimson Rose
Salmon Rose
Scarlet
Dark Red
Yellow
Apricot
Orange
Apricot Salmon
Orange Salmon
Flesh Salmon
Pink Salmon
Flame Orange

DOUBLE CAMELLIA PICOTEE TYPE

Pink
Rose
Apricot
Salmon
Red

FIMBRIATA PLENA TYPE (CARNATION)

White
Blush
Pink
Rose
Crimson Rose
Red Salmon
Dark Red
Yellow
Apricot
Orange
Salmon

ROSEBUD TYPE

Blush
Pink
Rose
Salmon
Flame

HANGING BASKET TYPE

White
Pink
Rose
Scarlet
Flame Orange
Yellow
Apricot
Orange
Salmon
Red Salmon

GIANT CRESTED SINGLE TYPE

White
Pink
Rose
Scarlet
Dark Red
Yellow
Orange
Salmon

GIANT FRILLED SINGLE TYPE

White
Rose
Crimson Rose
Scarlet
Dark Red
Apricot
Orange
Salmon
Fascination

CALLA LILLIES

TYPES AND COLORS

SUMMER FLOWERING

- Yellow Calla — (Elliottiana Spotted Leaf)
- Pink Calla — (Rehmanni)
- Summer White Calla — (Maculata) Spotted Leaf

READY IN NOVEMBER

	each	doz.	100
Price	.35	\$3.50	\$26.00

The Callas as described above are all summer blooming Calla Lillies, they can be planted in full sunlight or part shade, they can be grown in all types of soil, although a well drained sandy loam is preferred. Leave

in ground for three years then dig and separate as the bulb will multiply, plant in spring when all danger of heavy rain fall is over.

WINTER AND SPRING FLOWERING CALLA LILLIES

- Large White Calla — (Aethiopica)
- Small White Calla — (Godfrey)
- Black Calla — (Arum Pictum)

	each	doz.	100
Price	.35	\$3.50	\$26.00

Ready in July and August. Culture is the same as Summer blooming Callas with the exception that bulbs should be planted in Fall or in early Spring in severe climates.

GLADIOLI BULBS

Shipping dates:
November through February

RECENT GLADIOLI INTRODUCTIONS

- Shirley Temple — Creamy White, Ruffled.
 - Corona — Creamy white with rose edging.
 - Margaret Beaton — Snow White.
 - Chamouny — Rose Pink with Silver edge.
 - Takina — Rich Light Purple.
 - Algonquin — Scarlet.
 - Wanda — Cream.
 - Jeanie — Clear Pink with Creamy Throat.
- | | | |
|-------|-------------|----------------|
| Large | \$1.00 doz. | \$7.00 hundred |
|-------|-------------|----------------|

- Margaret Fulton — Rose Salmon.
- Rosa Van Lima — Rose Pink.
- Beacon — Rose Scarlet with Cream Blotch.
- Dr. F. E. Bennett — Large Scarlet.
- King Arthur — Ruffled Lavender.
- Golden Chimes — Clear Yellow.
- Irak — Gray.

Large	.75 doz.	\$6.00 hundred
-------	----------	----------------

VERY GOOD GLADIOLI BULBS

- Break O'Day — Light Pink.
 - Token — Flame Salmon with Yellow Throat.
 - Apricot Glow — Orange Buff.
 - Gold Eagle — Bright Yellow.
 - La Paloma — Deep Orange.
 - Orange Queen — Orange Yellow.
- | | | |
|-------|----------|----------------|
| Large | .60 doz. | \$4.80 hundred |
|-------|----------|----------------|

SOME OF THE BEST GLADIOLI TYPES

- Maid of Orleans — Creamy White.
- Picardy — Salmon Pink.

KING ALFRED DAFFODIL

READY IN AUGUST

Large	\$1.50 doz.	\$10.00 hundred
Medium	1.25 doz.	8.00 hundred

P L A N T S

QUANTITY	KIND OF PLANTS	COLOR	PRICE

S E E D S

QUANTITY	KIND OF SEEDS	COLOR	PRICE

C A R R I A G E

SEEDS . . . BULBS . . . Are sent prepaid.

PLANTS . . . Are shipped by Express. Carriage charge payable by purchaser.
Please print or write your orders plainly and if writing us use separate sheet of paper.

TUBERS and PLANTS are charged at unit prices if labelled separately as to color, etc. If assorted at dozen rate will be shipped assorted.

All stock guaranteed true to description but no guarantee for the result of growing over which we have no control.

1948 INTRODUCTIONS

HANGING BASKET PINK NO. 4

Carnation Type, flowers from 3½ to 4" in diameter. Color light Pink with White center. Basket Pink No. 4 is the most prolific bloomer of all Baskets, over 500 flowers at one time is not unusual on a well grown plant.

Medium to Large Tubers — Each \$3.50

HANGING BASKET PINK NO. 16

Ruffled Camellia type, flowers 4 to 5" in diameter of Pink Salmon color. Flowers in late season, flatten and make very effective Basket. The 1947 favorite.

Medium to Large Tubers — Each \$5.00

HANGING BASKET PINK NO. 10

Scheduled for introduction in 1950. Due to the tremendous acclaim it has created we offer it this year in limited number to those who want the last thing in Hanging Baskets.

Formal Rose Type flowers from 5 to 6" in diameter of pure Pink color. Carries its form to the last flower. Has never been displayed outside our own Greenhouses.

Medium to Large Tubers — Each \$25.00

HANGING BASKET ROSE NO. 4

Crimson Rose Color — Carnation Type.

Medium to Large Tubers — Each \$15.00

HANGING BASKET WHITE NO. 11

Pure White — Gardenia Form

Medium to Large Tubers — Each \$15.00

DOUBLE CAMELLIA PINK SALMON NO. 1

A vigorous grower. Plants attain 3 feet and more in height. Flowers of pure Pink Salmon color 7 to 9" in diameter. A truly beautiful specimen plant.

Medium to Large Tubers — Each \$3.50

DOUBLE CAMELLIA WHITE NO. 20

Large pure White, Rose Type flowers. Supply Limited.

Medium to Large Tubers — Each \$5.00

All introductions are propagated by cuttings from our Breeding Stock. In ordering from this page please give Type, Color and Plant Number.



HANGING BASKET

Specimen plant of Tuberous Rooted Begonia Hanging Basket. These plants attain 3 feet in diameter and up to 1,000 blooms at a time. Can be grown out doors in any sheltered place, protected from direct sun and strong wind.

ANTONELLI BROS.

ROUTE 2 • BOX 252 • SANTA CRUZ, CALIFORNIA

1296